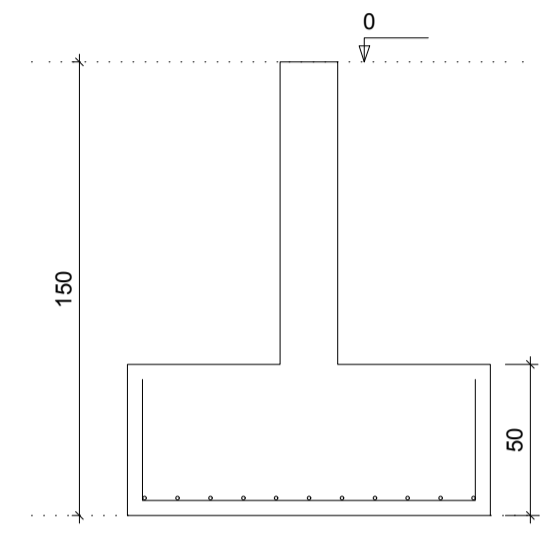
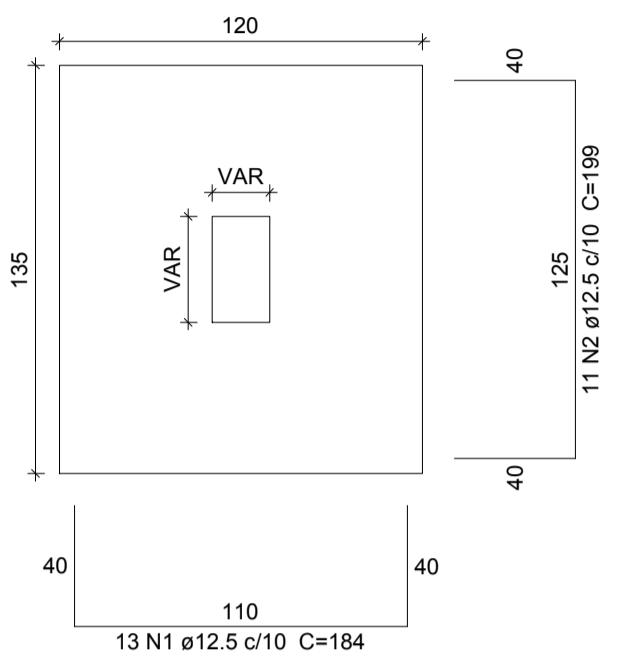


S1=S2=S8=S11=S12=S13=S14=S17=S19=S20  
 =S21=S22=S25=S26=S27=S28=S31=S32=S34  
 =S35=S36=S37=S38=S39=S40=S41=S42=S43  
 =S46=S47=S48=S49=S50=S51=S52=S53=S54  
 =S55=S56=S59=S60=S61=S62=S65=S66=S67  
 =S68=S69=S70=S71=S72=S73=S76=S77=S78  
 =S79=S82=S83=S84=S85=S86=S87=S88=S89  
 =S90=S91=S92=S93=S96=S97=S98=S99=S102  
 =S103=S104

PLANTA  
 ESC 1:25

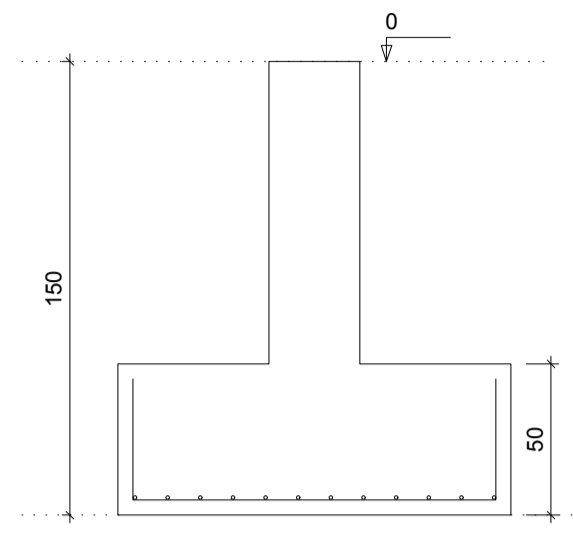
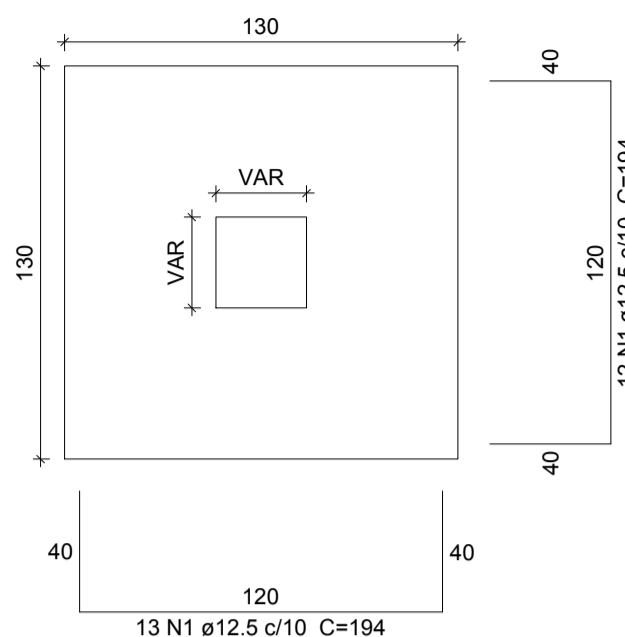
CORTE  
 ESC 1:25



S3=S4=S5=S6=S7=S18=S33

PLANTA  
 ESC 1:25

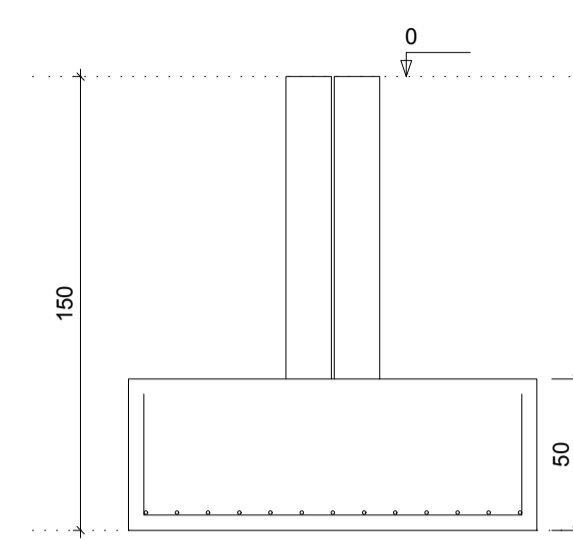
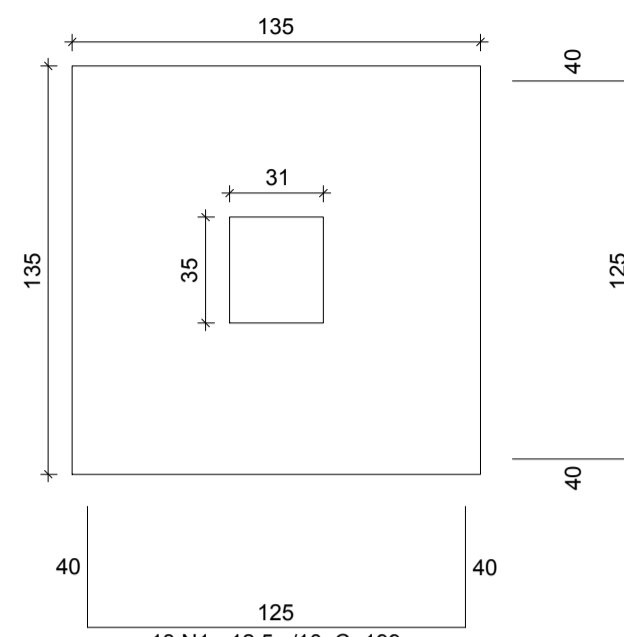
CORTE  
 ESC 1:25



S9-10

PLANTA  
 ESC 1:25

CORTE  
 ESC 1:25



Relação do aço						
ELEMENTO	AÇO	N	DIAM	Q	UNIT (cm)	C.TOTAL (cm)
7xS3	CA50	1	12.5	175	194	33950
75xS47	CA50	1	12.5	975	184	179400
	CA50	2	12.5	825	199	164175
S9-10	CA50	1	12.5	26	199	5174
S15-16	CA50	1	12.5	26	199	5174
S23-24	CA50	1	12.5	26	199	5174
S29-30	CA50	1	12.5	26	199	5174
S44-45	CA50	1	12.5	26	199	5174
S57-58	CA50	1	12.5	26	199	5174
S63-64	CA50	1	12.5	13	209	2717
S74-75	CA50	2	12.5	14	199	2786
S80-81	CA50	1	12.5	26	199	5174
S94-95	CA50	1	12.5	26	199	5174
S100-101	CA50	1	12.5	26	199	5174

Resumo do aço

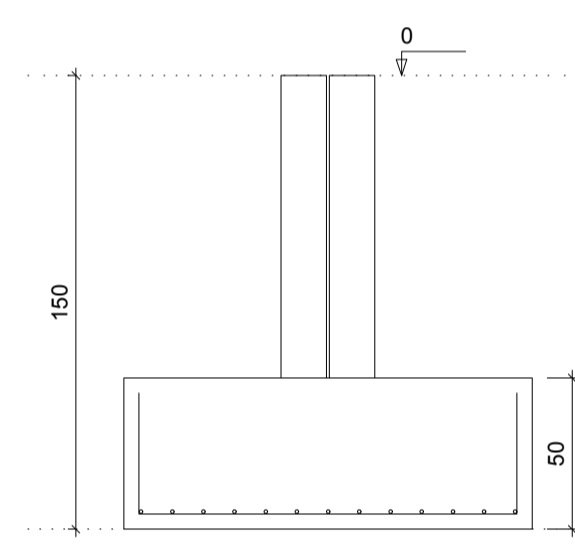
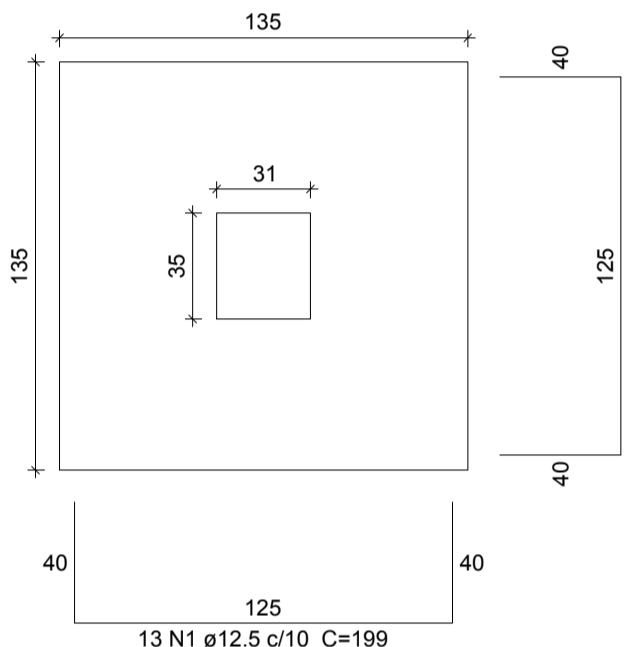
AÇO	DIAM	C.TOTAL (m)	PESO (kg)
CA50	12.5	4347.7	4188.3
PESO TOTAL			
CA50			4188.3

Vol. de concreto total (C-25) = 76.76 m³  
 Área de forma total = 239.25 m²

S15-16

PLANTA  
 ESC 1:25

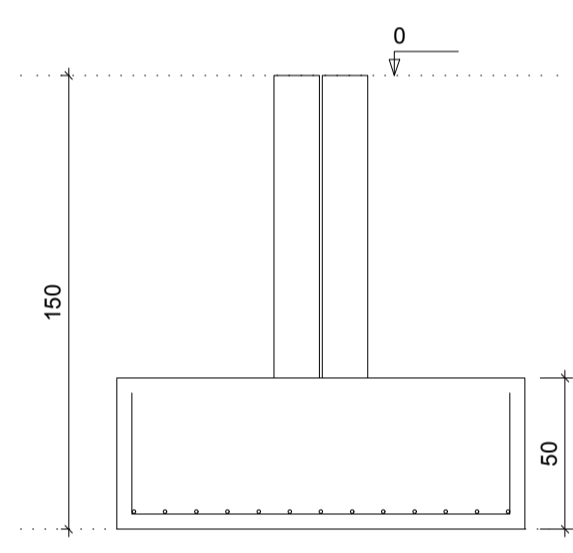
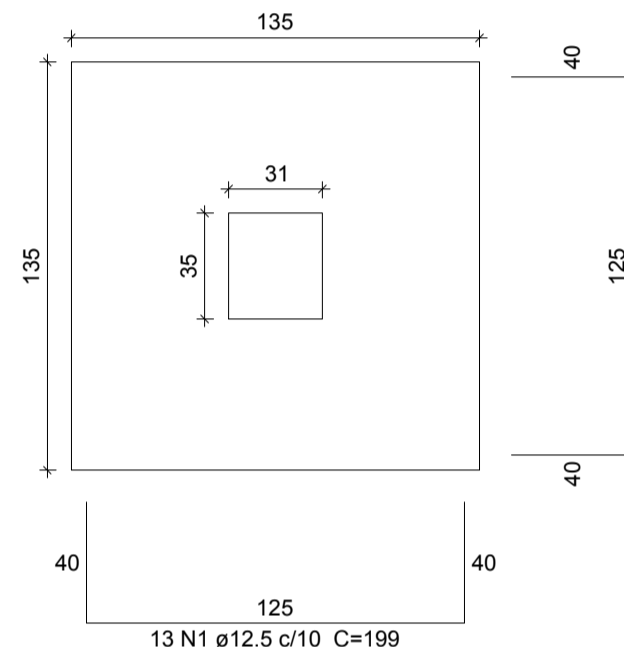
CORTE  
 ESC 1:25



S23-24

PLANTA  
 ESC 1:25

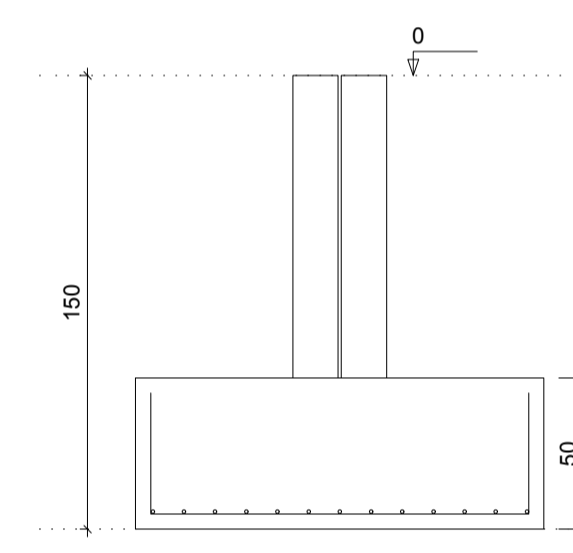
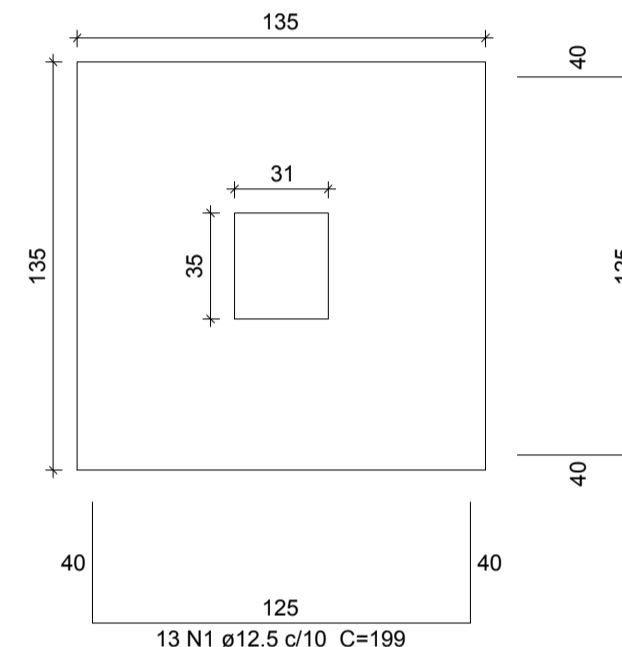
CORTE  
 ESC 1:25



S29-30

PLANTA  
 ESC 1:25

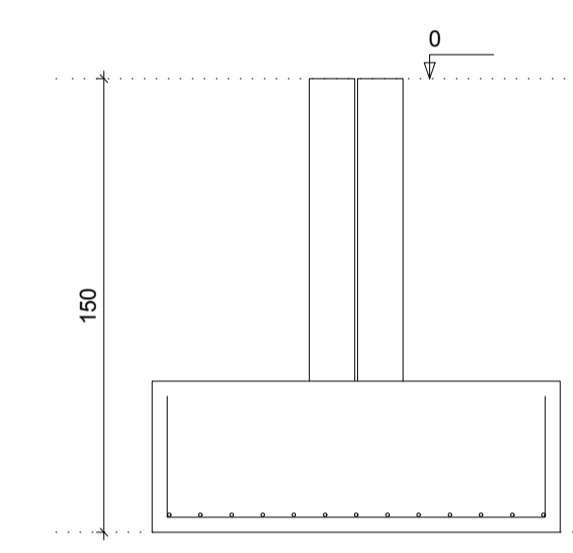
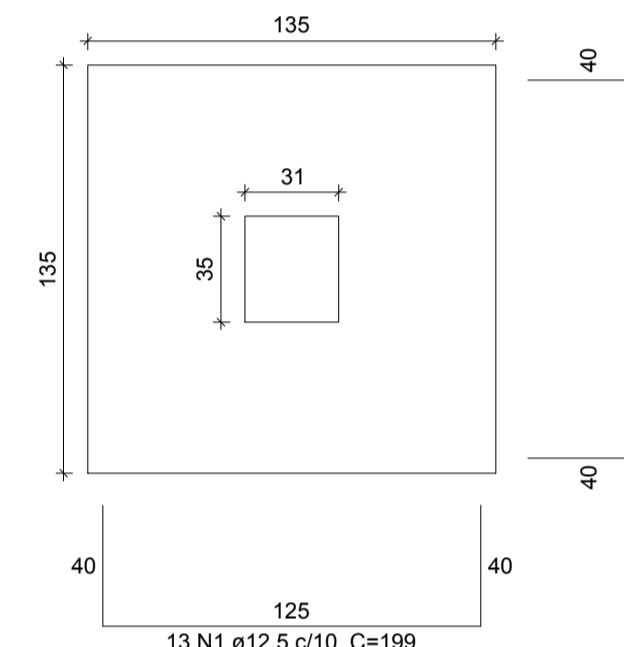
CORTE  
 ESC 1:25



S44-45

PLANTA  
 ESC 1:25

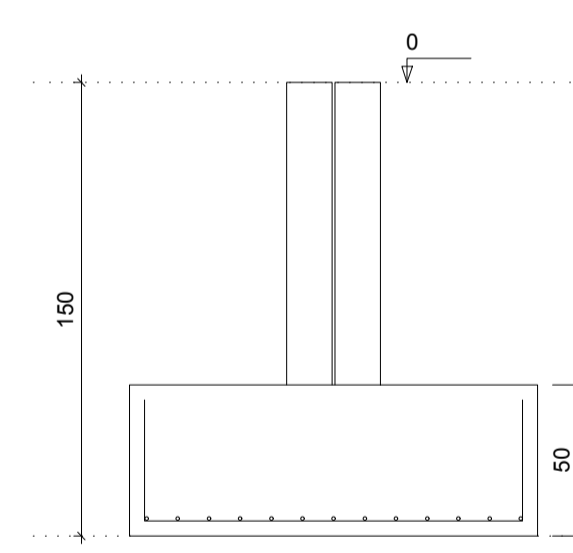
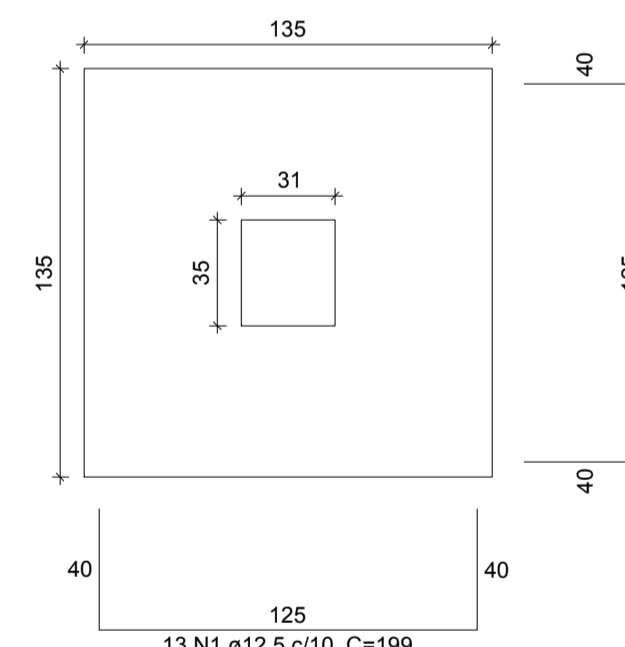
CORTE  
 ESC 1:25



S57-58

PLANTA  
 ESC 1:25

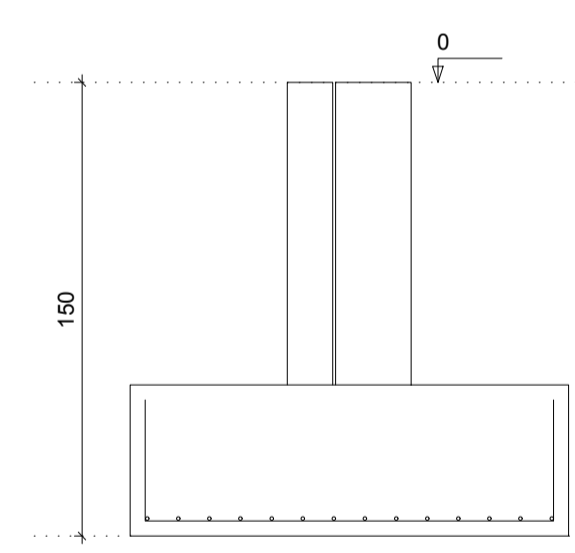
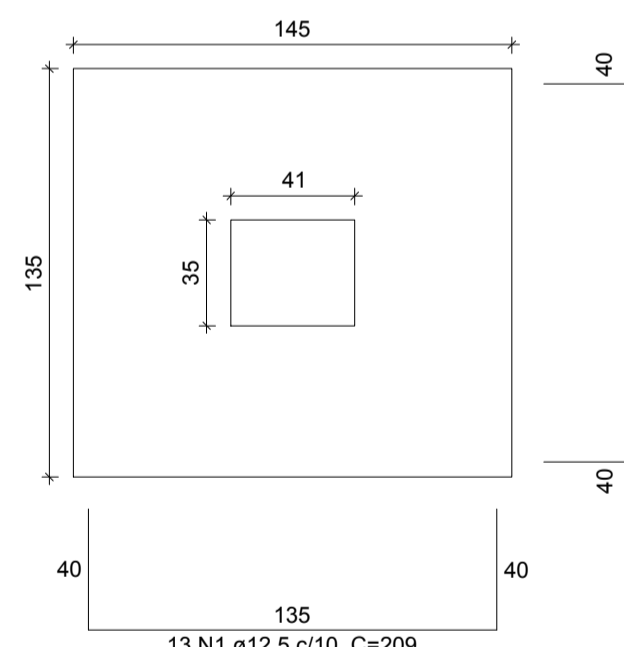
CORTE  
 ESC 1:25



S63-64

PLANTA  
 ESC 1:25

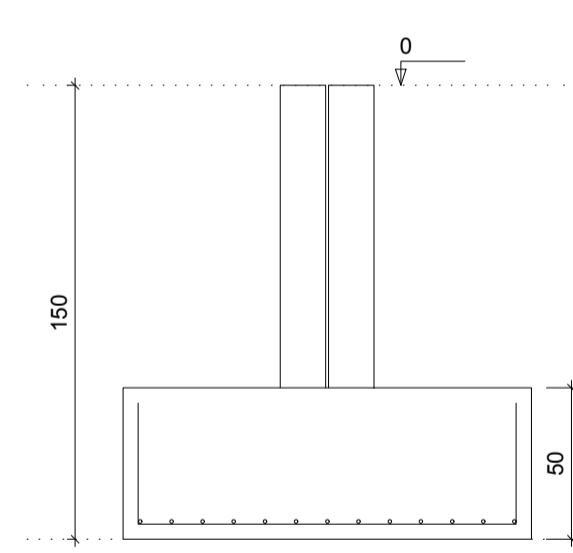
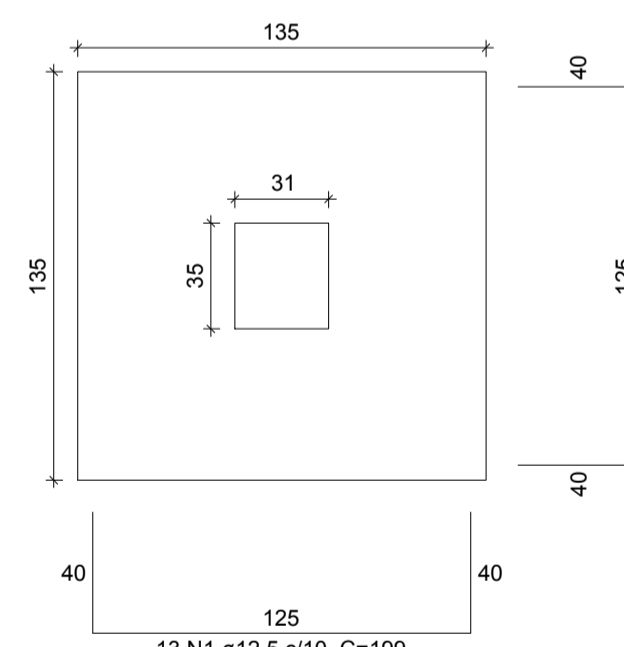
CORTE  
 ESC 1:25



S74-75

PLANTA  
 ESC 1:25

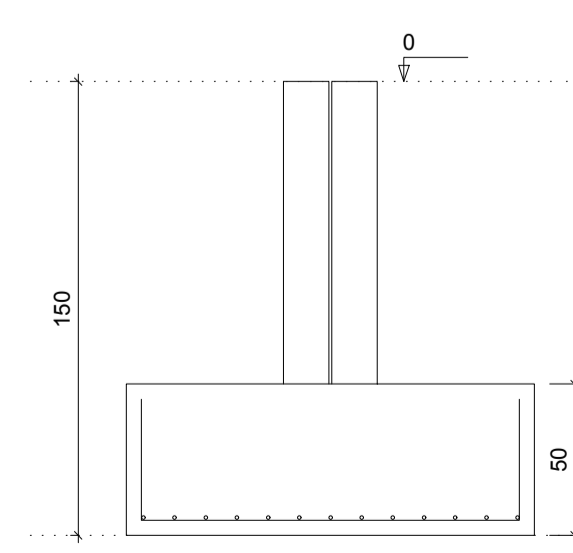
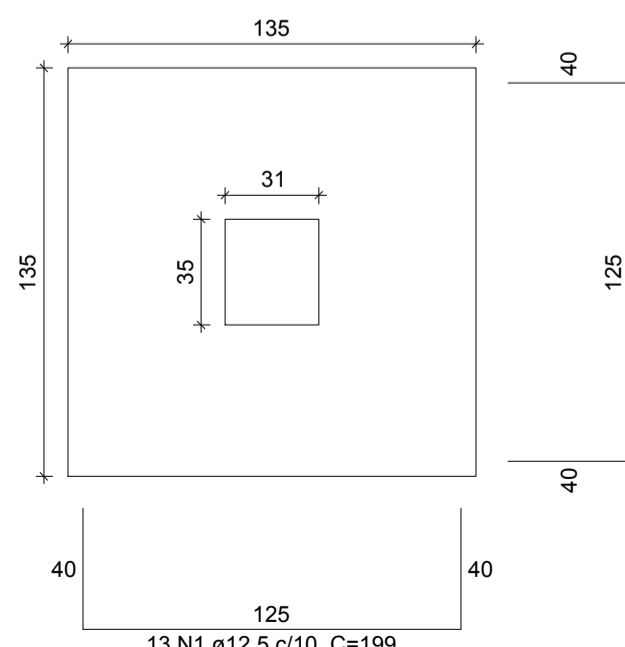
CORTE  
 ESC 1:25



S80-81

PLANTA  
 ESC 1:25

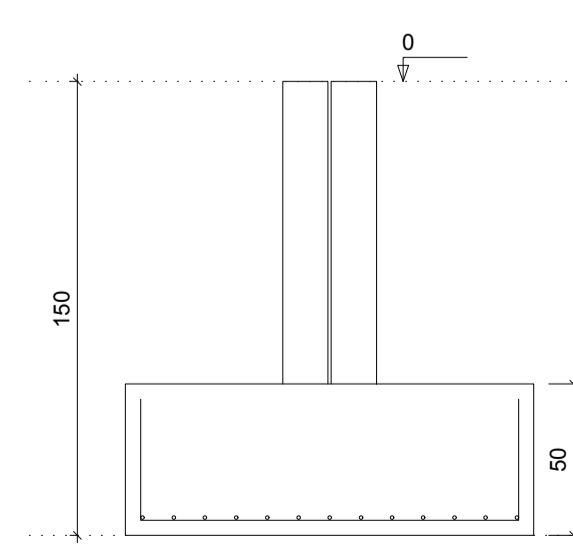
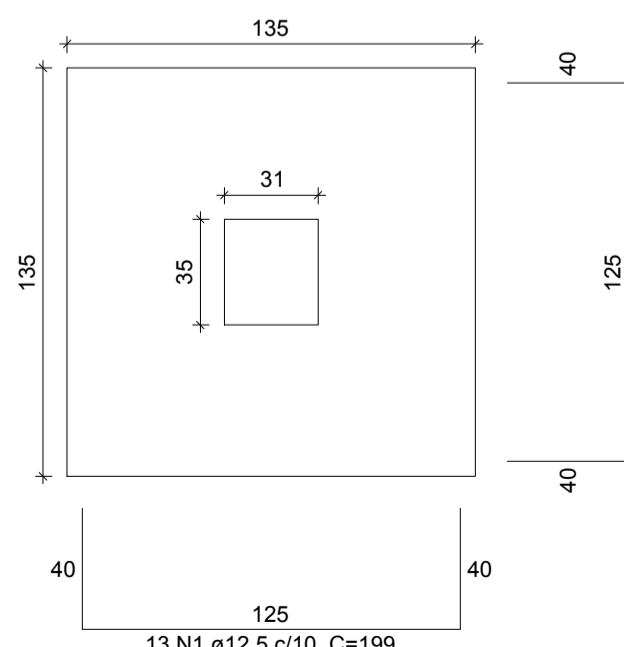
CORTE  
 ESC 1:25



S94-95

PLANTA  
 ESC 1:25

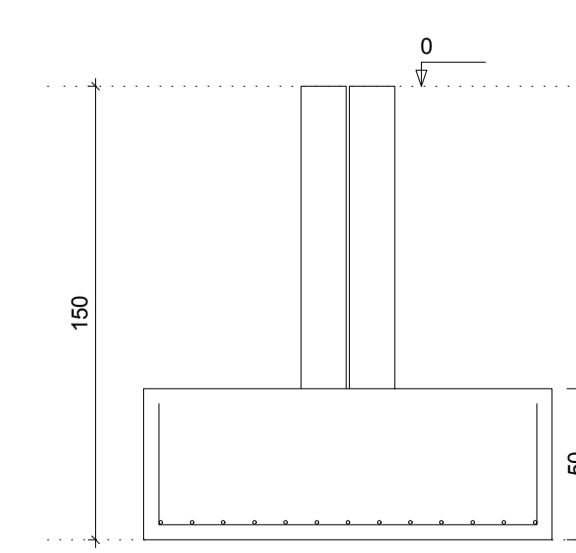
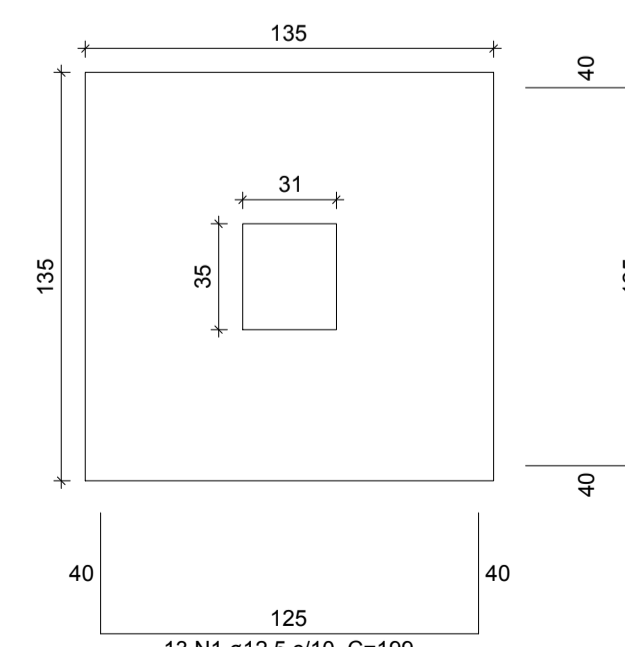
CORTE  
 ESC 1:25



S100-101

PLANTA  
 ESC 1:25

CORTE  
 ESC 1:25



TIPO DA OBRA:		REESTRUTURAÇÃO DA ESCOLA ESTADUAL JOSÉ ALVES BEZERRA	
PROPRIETÁRIO CPF OU CGC:		PREFEITURA MUNICIPAL DE PORTO DOS GAÚCHOS	
LOCAL E INSCRIÇÃO CADASTRAL:		Endereço: Av. Guilherme Meyer Município de Porto dos Gaúchos - MATO GROSSO	
AUTOR DO PROJETO: CREA:		Evelin Luani Montagna MT 039125	
RESPONSÁVEL TÉCNICO: CREA:		Evelin Luani Montagna MT 039125	
ESCALA: INDICADA	DATA: OUT/2019	ASSUNTO: PROJETO ESTRUTURAL: PLANTA DE ARMAÇÃO DAS SAPATAS	FOLHA Nº 02/45
E S T A T I S T I C A			
ÁREAS:	% DE OCUPAÇÃO	COEF. APROVEIT.	Nº DE PISOS
VER PROJETO ARQUITETÔNICO	TÉRREO	DEMAIS PAV.	
			01